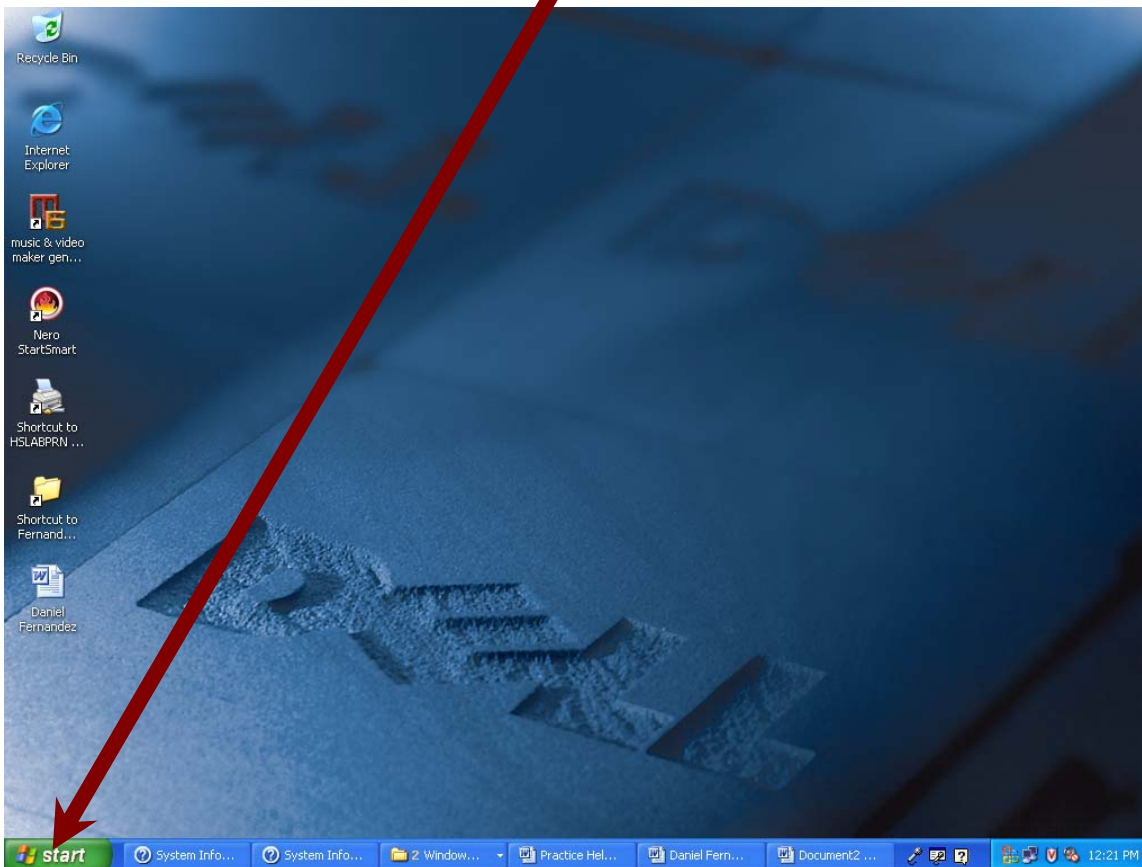


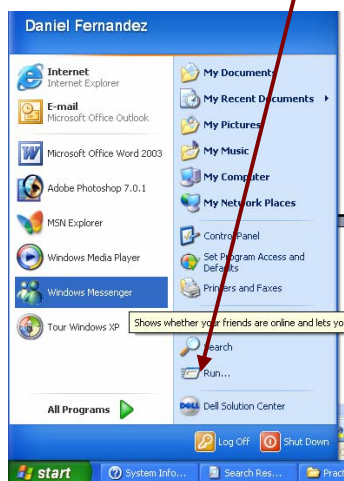
First and Last Name
First and Last Name
Ms. Norman
Principles of Technology 1 (Block)
Date

How to Find Out the Display Memory of Your Computer

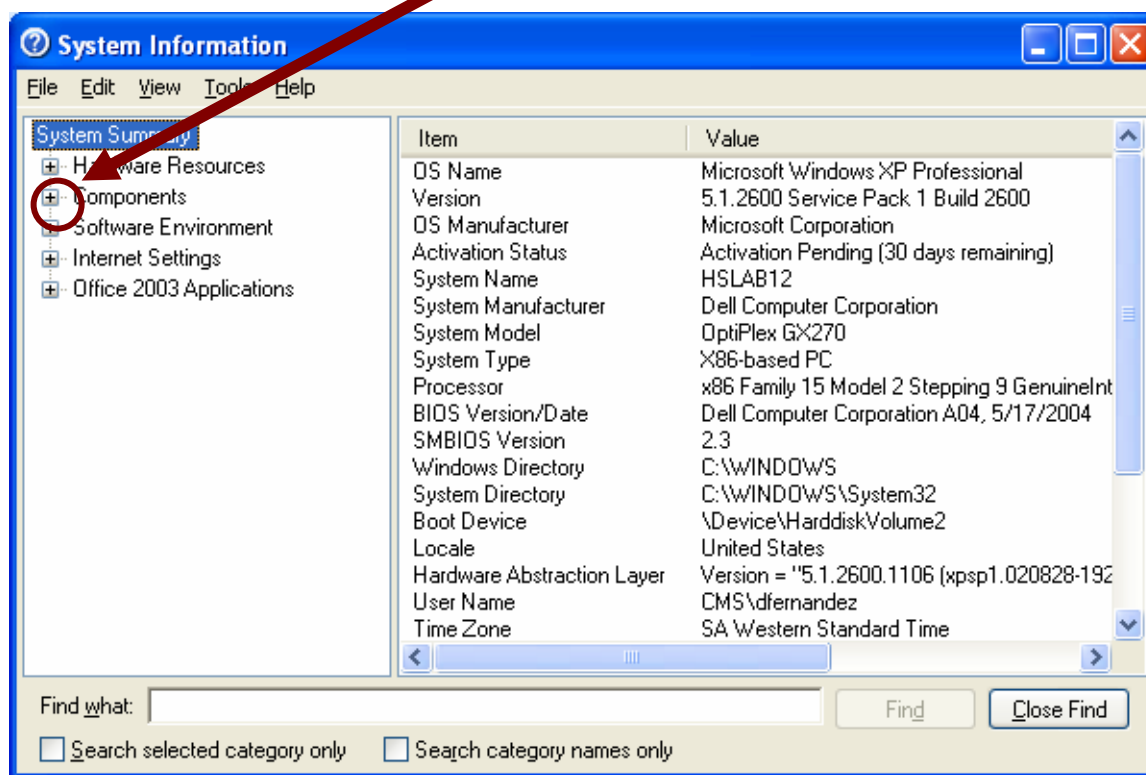
1. Take your mouse and hit **Start**  on the bottom left of your computer.



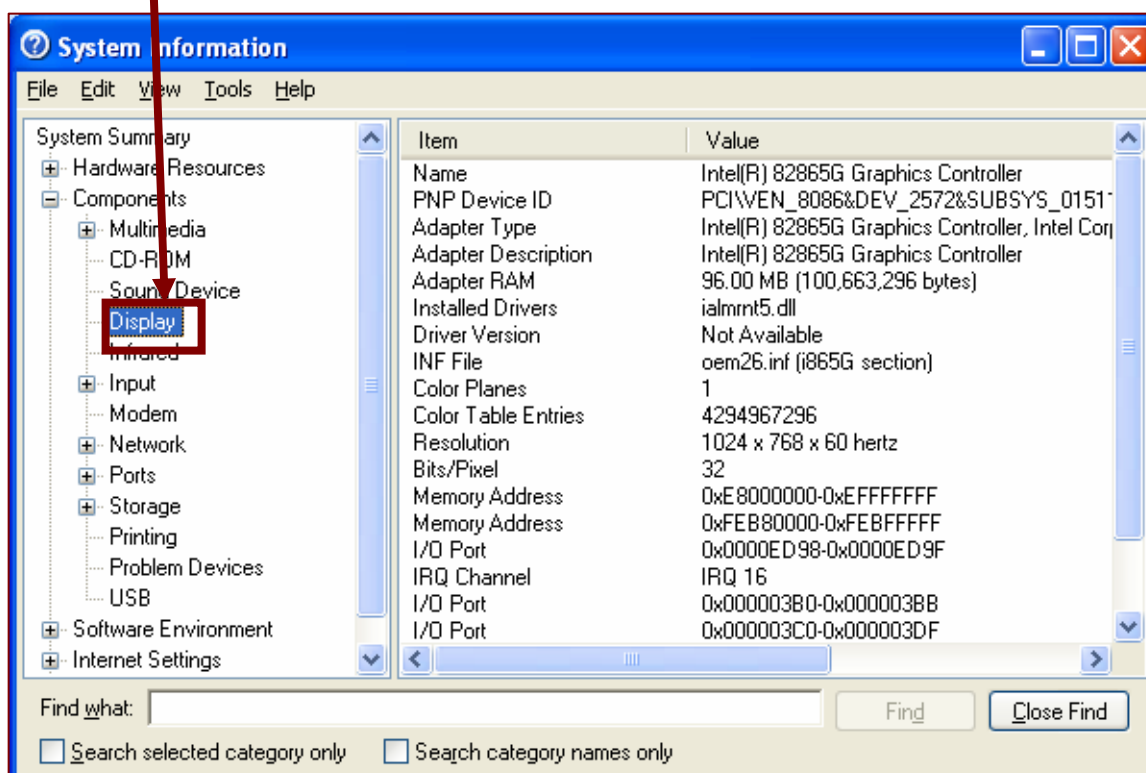
2. After you hit start, then hit **RUN.**



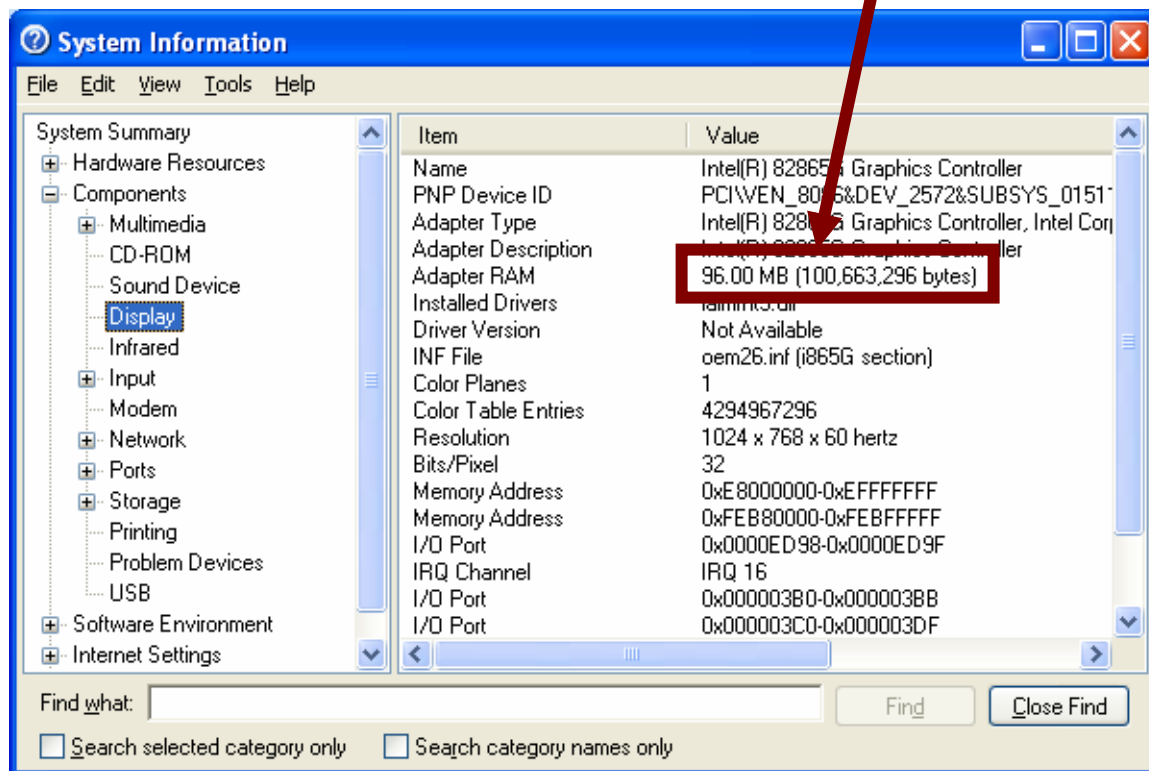
- After you hit **Run**, type in `msinfo32.exe`, and press enter. Caution: It could take a while to load so don't get scared if it doesn't respond.
- After you hit enter, the following window appears. When this window opens click on the plus sign on **COMPONENTS**.



- When you hit components, a list will appear. In the following list locate **DISPLAY** and click on it.



- When you hit display, a list, with technical information will appear. Ignore all these little facts and just read the 5 line where it says **adapter RAM**.



- Congratulations, you now know how much video RAM your computer has. This is helpful for people who want to find out if their computer will support a game.